

# CVR



The Intelsint CVR fully automated coverslipper takes part in a group of innovative scientific instruments designed and produced by Intelsint for automated coverslipping.

Intelsint CVR produces high quality slides which can be stored safely for long time.

Once the slide is inserted into the loading station, the user does not need to manipulate or make any operation on it.

The slides are automatically placed on trays which can be extracted and taken directly to the pathology table.

**Intuitive software and perfect mounting provide the best solution for the speed of the work in the lab**

## Mounting steps

The coverglass is taken by suction cups while the dispensing needle moves from the stand-by position (solvent cup) to the dispensing position

The glass slide is brought to the mounting site by a mechanical arm and the medium is dispensed on the section

The coverglass is mounted through a particular movement of the suction cup system to avoid bubble air formation

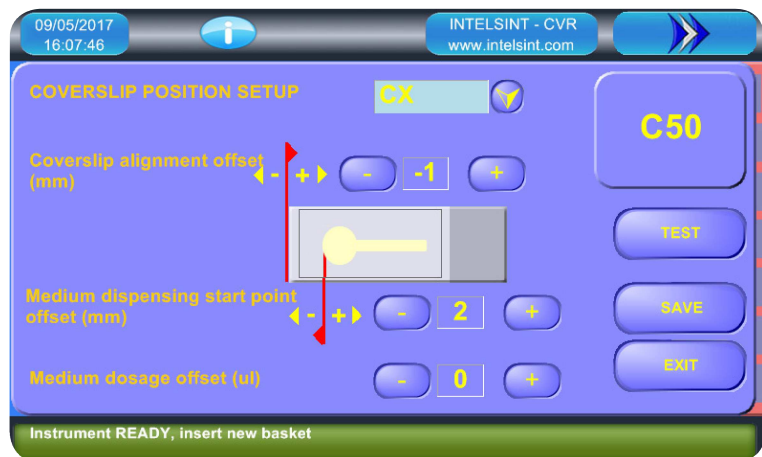
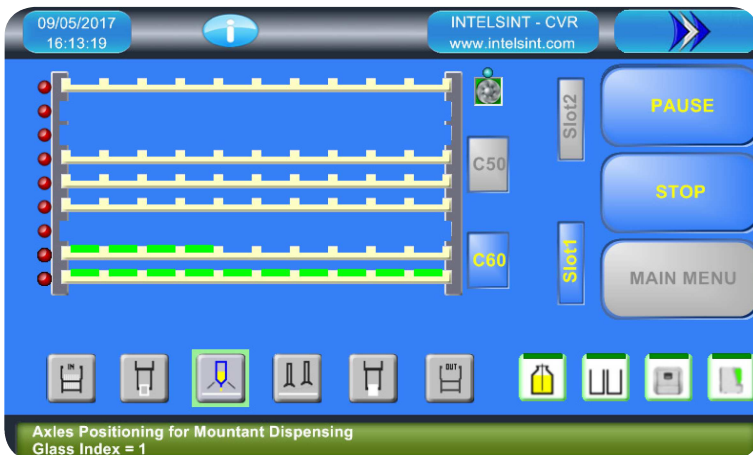
The covered slide is brought by the arm on a dedicated tray and the dispensing needle comes back to stand-by position into the cleaning solvent

## CVR - Features

- Possibility of continuously loading slide baskets (30 slides capacity each)
- It can mount coverglasses with different sizes (24x40/50/60 mm), with rapid holder substitution
- Possibility to work in "wet" or "dry" mode
- Indication of mistakes during slides mounting
- Regulation of dispensing offset (position, quantity and speed) without needle substitution
- Mounting medium bottle with level sensor, rapid connection and easy substitution
- Frontal exit for empty slide basket

### Revolutionary and unique automatic mounted slides exit system

As a unique feature, our instrument is able to bring the mounted slides directly on dedicated trays which can be taken directly to the pathologist's desk, this results in time saving for the user. When the tray is completed it is automatically pushed forward in order to advise that it is ready to be taken.



## CVR - Technical Specification

<b>Dimensions and weight</b>	Dimensions (l x h x p)	860 x 780 x 770 mm
	Monitor (l)	+ 400 mm
	Worktop (l x p)	860 x 770 mm
	Weight	80 Kg
<b>Electrical data</b>	Power supply	115 ÷ 230 V
	Frequency	50 ÷ 60 Hz
	Electrical power	0,6 kW
<b>Working environment</b>	Temperature / Humidity	15 ÷ 30 °C / 70% max
<b>Productivity</b>		180 slides/hour (directly on the tray)
<b>Mounting Medium</b>	Bottle volume	500 ml
<b>Mounted slides output</b>		9 trays with 10 places each