

HISTOLOGY EQUIPMENT



TISSUE
PROCESSORS

ETP
EFTP



INTELSINT

ETP

ETP



Fully enclosed, "state of the art" features, safe and highly reliable, the Intelsint ETP is the right answer for the day-by-day tissue processing needs of every Histology laboratory.

With a processing capacity of 360 specimens, three paraffin containers and an easy to operate HMI (Human Machine Interface) it sets itself at the top of the category.

Designed with specimens safety and operator ergonomics in mind, the ETP is also capable of performing in unfavorable environments.

Its fully automated RFD (Remote Fill and Drain) feature allows the user a safe, clean and easy reagents renewal.

Simple and economic service and maintenance is one of the benefit of Intelsint ETP

Code 906.003

EFTP

EFTP

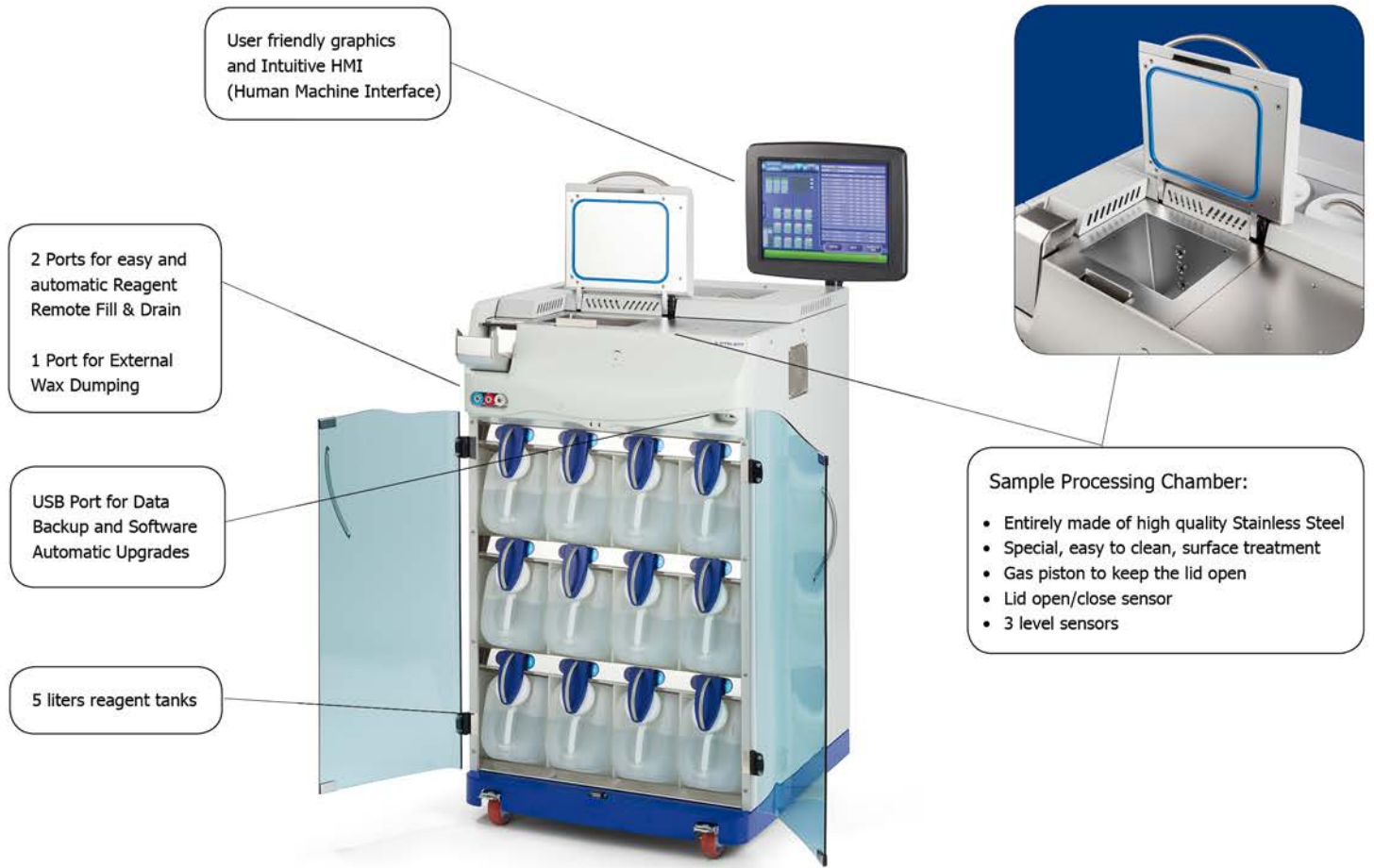
Fully enclosed, "state of the art" features, safe and highly reliable, the Intelsint EFTP is the right answer for the day-by-day tissue processing needs of every Histology laboratory.

The EFTP is the fastest non-microwave tissue processor today available. Up to 450 biopsies can be safely processed in 45 minutes. This result can be achieved with traditional reagents or with most of the Xylene and Ethyl alcohol substitutes available on the market.

The reagents heating is safely performed during filling into the sample processing chamber without any delay by a patented device called EHE (Enhanced Heat Exchanger). Only three reagents (plus fixation) are necessary to successfully and rapidly process biopsies. Every sample is evenly warmed at the desired temperature since the very beginning of each processing step. Any risk of overheating is avoided thanks to the special conformation and the multiple safety devices of the EHE.

Codice 906.004





User friendly graphics and Intuitive HMI (Human Machine Interface)

2 Ports for easy and automatic Reagent Remote Fill & Drain
1 Port for External Wax Dumping

USB Port for Data Backup and Software Automatic Upgrades

5 liters reagent tanks



Sample Processing Chamber:

- Entirely made of high quality Stainless Steel
- Special, easy to clean, surface treatment
- Gas piston to keep the lid open
- Lid open/close sensor
- 3 level sensors

Standard features

- ✓ Overnight Processing
- ✓ Fast Processing (microwave free) (EFTP)
- ✓ Reagent Management System (RMS)
- ✓ Remote Fill & Drain
- ✓ 450 samples capacity
- ✓ 15" Touch Screen Operation Control
- ✓ 3 Level Sensors
- ✓ Reagent Partial Load Capacity
- ✓ Wax Cleaning Cycle
- ✓ Data Backup on USB port
- ✓ 18 Process Programs
- ✓ Reverse Processing Special Program
- ✓ Process End Time Management
- ✓ Fume Control Charcoal Filter
- ✓ Operator management with customizable level of access
- ✓ Operator Login with barcode reader

Optional features

- ✓ Backup system with external UPS
- ✓ Safeguard reagents management
- ✓ Data protection system with CPU-UPS
- ✓ Pre-filled reagents with bar-code reading on the tanks
- ✓ Identification of the baskets with barcode reader
- ✓ Connection with the L.I.S.
- ✓ Remote connection for service

Xylene free.
All INTELSINT tissue processors can efficiently work with xylene and alcohol substitutes





Process Editing

Simple
Clear
Easy
Intuitive

18 Process available

Drag & Copy Function
Copy Process Function
Controlled Field Value

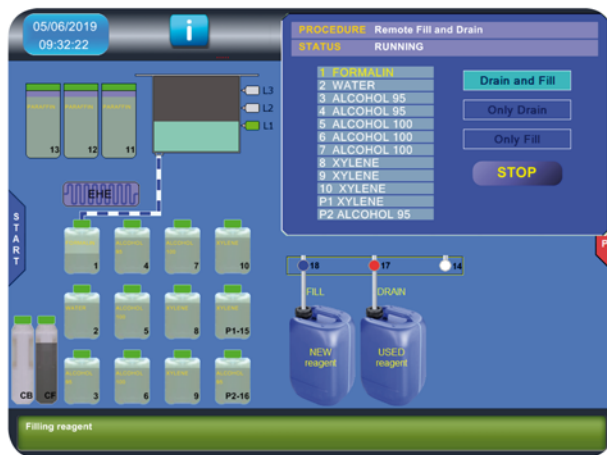
Process Start and Run

Most Used Process Function
Easy End of Process Setting

Graphic Process Controls
Multi-language
Reagent Level Check
Partial Reagent Load
Samples Baskets Check

Info Function to check 'at a glance' the most important instrument parameters

Reagent Quality Check



Remote Fill & Drain

To change the reagents easily
without removing tanks

Graphic RFD Control
Reagent Quality Check
Easy and Intuitive HMI
RFD connected with RMS

Fast and Fully Automated

2 Ports for Reagents
1 Port for Paraffin

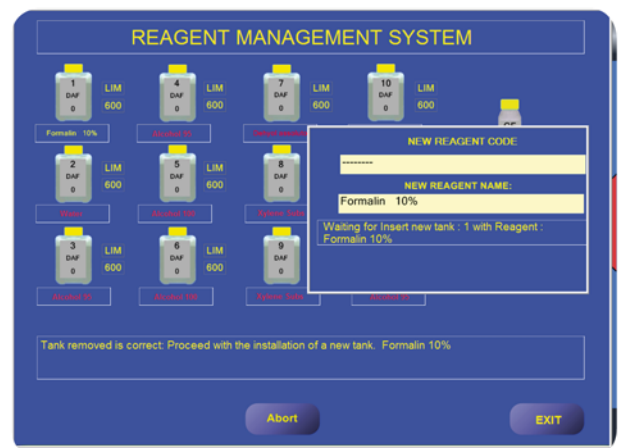
Pre-filled reagents management (optional)

This system allows you to define a specific set of reagents that must be used by the processor in combination with the RMS control system.

Reading and storing the bar-code on the tank.
Unique 18-digit code.

Status of the reagents (used or new reagent)
always updated

Simple and guided replacement of reagents from
the operator interface



Tissue processor configuration



ETP
Vacuum Tissue Processor
360/450 samples
(Code: 906.003)



EFTP
Fast Tissue Processor
360/450 samples
(Code: 906.004)



UPS1
UPS
230V -1350W for ETP
(Code: 3UP.S01)



UPS2
UPS
230V -1980W for EFTP
(Code: 3UP.S02)



BRSW
Barcode reader software
(for reagent and/or basket identification)
(Code: 906.060)



BRG
Barcode reader gun
(Code: 3BC.R01)



ALIS
Connection with LIS system
Dedalus Armonia
(Code: 906.050)



OR



OLIS
Connection with LIS system
other companies
(Code: 906.059)



RSSW
Remote Service software Licence
(Code: 906.061)



	ETP	EFTP	
Technical Specification	Sample Processing Capacity	360/450	
	Sample baskets	3	
	Load capacity for histological samples	450	
	SPC Level Sensors	3	
Protocols features	EHE for Fast Processing	NO	YES
	Processing Programs	18	
	Prefered programs, with quick start	6	
	Purge programs	4	
	Reverse Processing Special Program	1	
	Maximum time for each step	99 hh and e 59 mm	
	Start process maximum delay	15 gg max	
	Process End time/date	User programmable	
	Reagents	Processing reagents	10 Tanks - 5 Lt.
		Process chamber washing reagents	2 Tanks - 5 Lt.
Paraffin Containers		3 of 5 Lt.	
Reagents Temperature Range		20 - 65 (°C)	
Paraffin Temperature Range		55 - 65 (°C)	
Processing pressures		600/1200 Hpa	
RMS - Reagent Management System		YES	
RFD - Remote Fill & Drain		YES	
EWD - External Wax Dumping		YES	
PWD - Protected Wax Dumping		YES	
Vapor treatment		Charcoal filter	
Safe reagents (optional with External UPS)		YES	
Features HW & SW		Touch screen monitor	Colors LCD TFT - 15 "
	Available software languages	12	
	USB Ports (Data transfer, backup, Printer, UPS)	5	
	Network ports (Ethernet)	2	
	Remote Alarm Port	YES	
	External UPS (Optional)	1350 W	1820 W
	Electrical data	Rating	115-230 Vac - 50/60 Hz
Installed power		1000 W	1500 W
Env. conditions	Temperature / Umidity	15 - 30 °C / 70% max	
	Maximum elevation	2500 mls	
Approvals	CE, CTUVus	UL 61010-1:2004 R10.08, IEC 61010-2-010:2003, IEC 61010-2-101:2002, CAN/CSA-C22.2 NO. 61010-1-04+G11_610-2-010-04_610.2.101-04	
Dimensions and weights	Dimensions (LxDxH)	680 x 700 x 1500 mm (with monitor)	
	Weight	198 Kg	226 Kg



INTELSINT Srl

Via Rivoli 122 - 10090 Villarbasse (Turin) - Italy

Phone: +39 011 9528015

Email: info@intelsint.com

www.intelsint.it - www.intelsint.com

Agent / Dealer :

